



Worthing
College

FEEES & CHARGGES

2024/25

VOLUNTARY FINANCIAL CONTRIBUTION

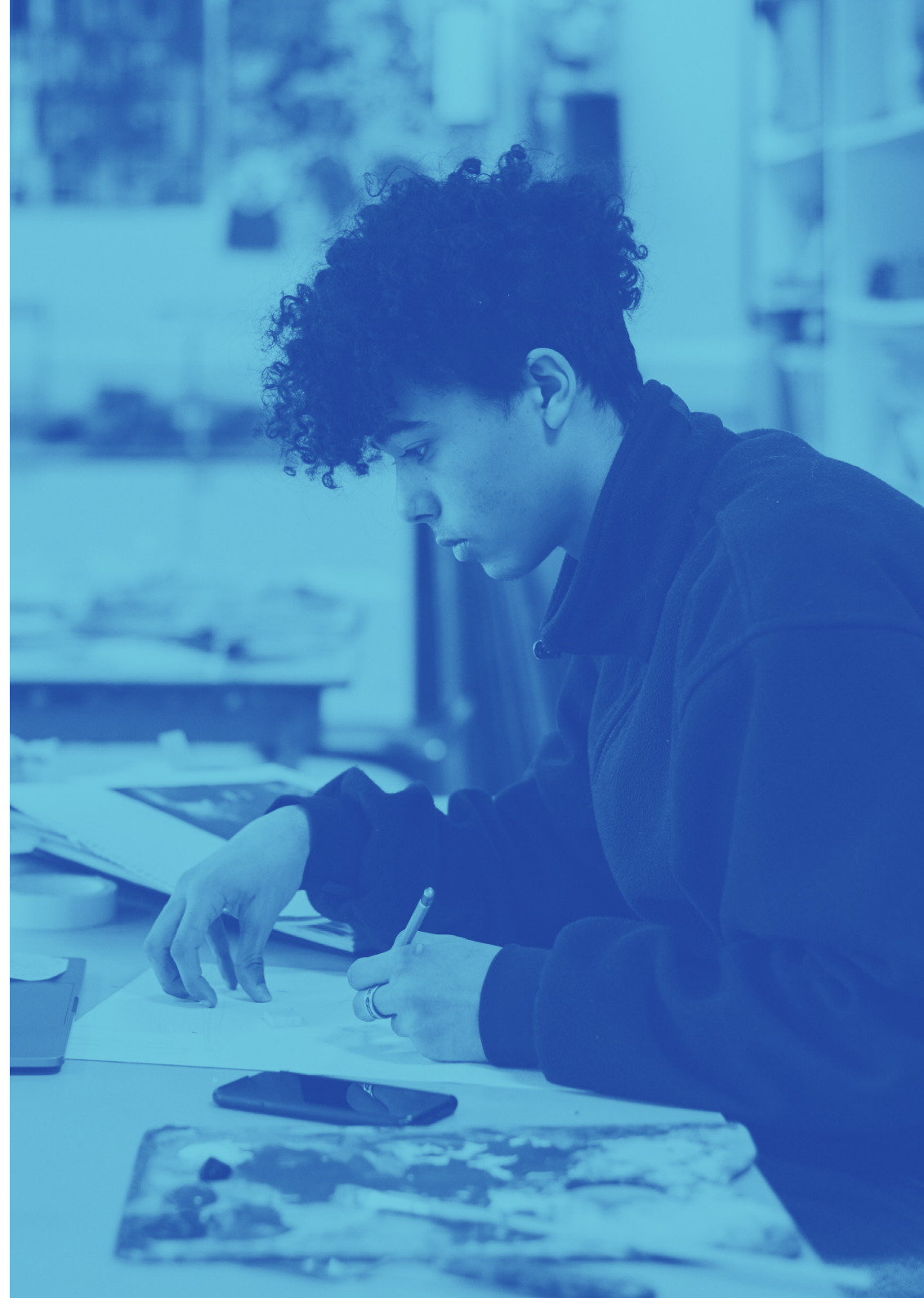
from the 31 August 2024

Parents/carers are requested to make a voluntary financial contribution to support the work of the college of either; £25, £50 or £75.

There is no obligation to make this contribution and not doing so will have no effect on how learners are treated during their studies. The contribution assists the college to provide learners with:

- > Enhanced student services provision
- > A full range of extra-curricular activities
- > Communication of news and information to parents, carers and students

The voluntary financial contribution is non-refundable. Payment of the voluntary contribution is to be made at enrolment. These fees can be paid through the college's Online Store here: <https://estore.chichester.ac.uk/> from 1 August 2024.



FEES FOR ACADEMIC COURSES

There are fees associated with the following educational courses; Health and Social Care, Sport, Sport and Exercise Science and Visual Arts courses.

The following fees are payable at enrolment unless otherwise advised.

Health and Social Care (CAMTEC Level 3 Foundation Diploma/ Extended Diploma)

Polo Shirt: £10.50 or Sweatshirt: £11.99
available from Broadwater Sports online or in person.

CLICK HERE to purchase online.
Students must buy at least one of these.

Sport & Sport and Exercise Science BTEC Courses (Optional for students studying PE A Level)

Students studying these courses (who are not in an Academy of Sport programme) are expected to buy an educational Worthing College Sport and PE kit package, at £80 supplied by Broadwater Sports.

For further details and to order online, **CLICK HERE**.

Visual Arts 1st Year (Year 12)

£78 materials fee per course, payable at enrolment.

These fees should be paid through the college's Online Store here: <https://estore.chichester.ac.uk/> from 1 August 2024.

- > Fine Art A-level
- > Graphic Communication A-level
- > Photography A-level
- > Textiles A-level

Visual Arts 2nd Year (Year 13)

£68 materials fee per course, payable at re-enrolment.

These fees should be paid through the college's Online Store here: <https://estore.chichester.ac.uk/> from 1 August 2024.

- > Fine Art A-level
- > Graphic Communication A-level
- > Photography A-level
- > Textiles A-level

FEES FOR ACADEMY OF SPORT

The costs and fees associated with being a member of any of our sports academies is as follows:

- > Academy membership fee is £110.00 per year paid at enrolment.

These fees should be paid through the college's online store here: <https://estore.chichester.ac.uk/> from 1 August 2024.

- > Academy kit packages from Broadwater Sports are required for each sport academy (except Women's Rugby). See the cost of each individual sport package at the link below, payable to Broadwater Sports.

For further details and to order online, [CLICK HERE](#).

- > Women's Rugby Academy First Year Kit (£95.00) payable from 1 August 2024, paid through the college's online store here: <https://estore.chichester.ac.uk/>



TUITION FEES FOR STUDENTS OVER 19

The fees due will vary according to the personal circumstances of the student and the courses being taken.

For more information about fees and funding, visit our website here: <https://www.worthing.ac.uk/college-life/financial-support>.

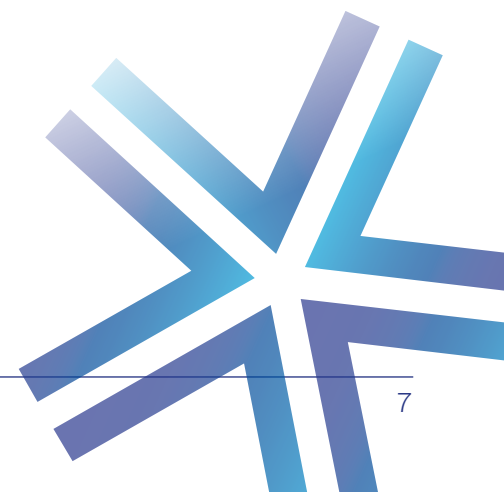
Students can find out whether they are required to pay fees by completing their pre-enrolment on the Application Tracker.

Please contact the Admissions Team to ask for further information by emailing admissions@worthing.ac.uk.

Advanced Learner Loans are available in some instances. For more information visit www.gov.uk/advanced-learner-loan or contact our Admissions Team.

Course fees for students retaking courses

Retakes of courses previously completed are not government funded. The amount due will vary according to the courses being studied. We will notify students individually about the fees to pay. This does not apply to GCSE Maths and English retakes which are fully funded for students who are 16-18 years old and do not yet have a grade 4 or equivalent.



FINANCIAL HELP FOR STUDENTS

We understand that financial matters are an important consideration for our students and that everyone's circumstances are different.

We believe that financial constraints alone should never be enough to prevent a student from studying and so we will work with you to find out what support you may be entitled to and help you to access any funding available.

The Learning Support Grant & Bursary

The Learning Support Grant is the name we have given to our discretionary learner support scheme and is administered by the college.

This grant can provide you with:

- > Help with travel costs
- > Help with equipment, books or resources costs
- > Contribution towards childcare costs
- > Help to pay UCAS admin fees
- > Contribution towards enrichment activities linked to your course

Applications for 2024-25 will open in August 2024 and can be made through the college website.

We have tried to make applying as simple as possible, but it will involve filling in online forms, providing evidence and telling us about your financial situation. We will then make an assessment based on your personal circumstances.



The image shows a multi-story building with a sign that reads "Worthing college". In the foreground, three students with backpacks are walking away from the camera. The entire image has a blue color overlay.

Worthing
college

HOW TO PAY

Please go to the college website and select College Services / Online Store. You will first need to create an account before using the store. Remember to enter the student number when using the store.

GET IN TOUCH

 @worthingcollege

 @worthingcollegeofficial

 @worthingcollege

 worthing.ac.uk

 01903 275 755

 1 Sanditon Way
Worthing
BN14 9FD

All information correct at time of publishing, June 2024

*Our fees and charges are reviewed annually please visit our website for details.